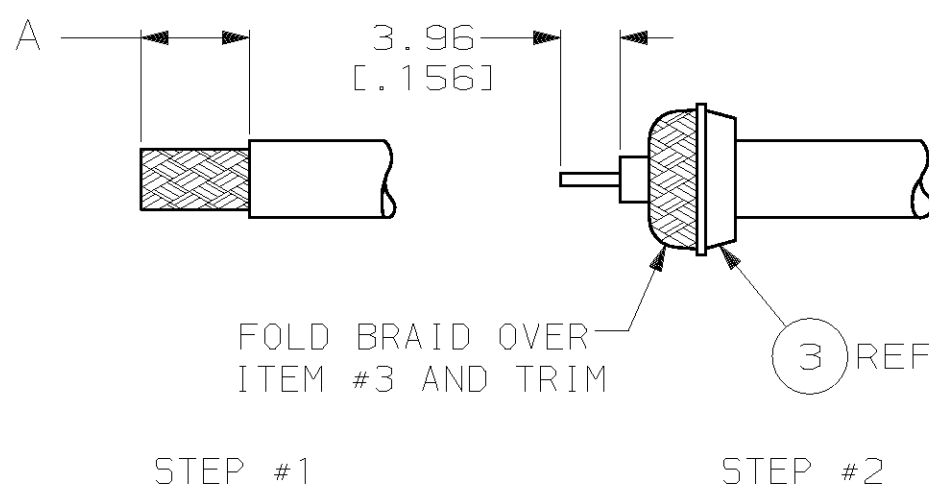
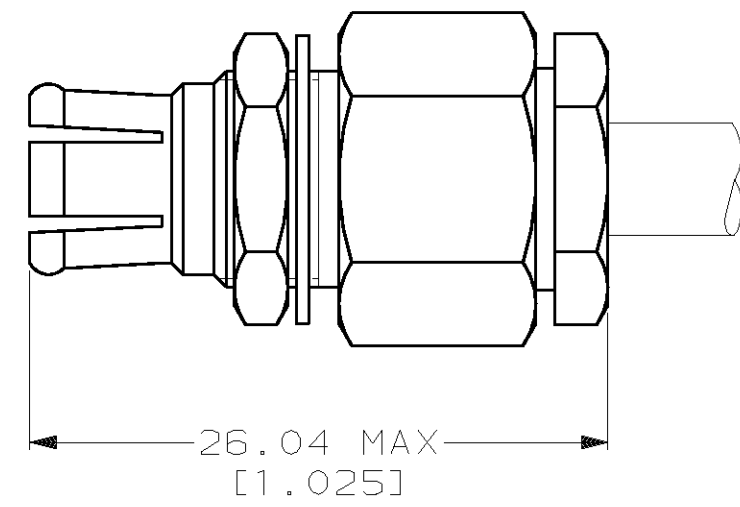
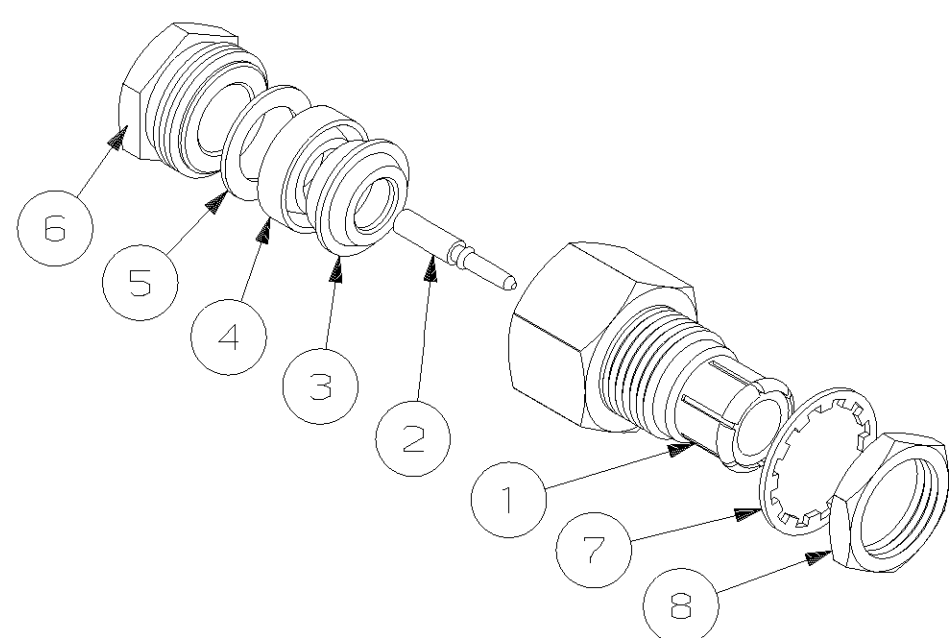
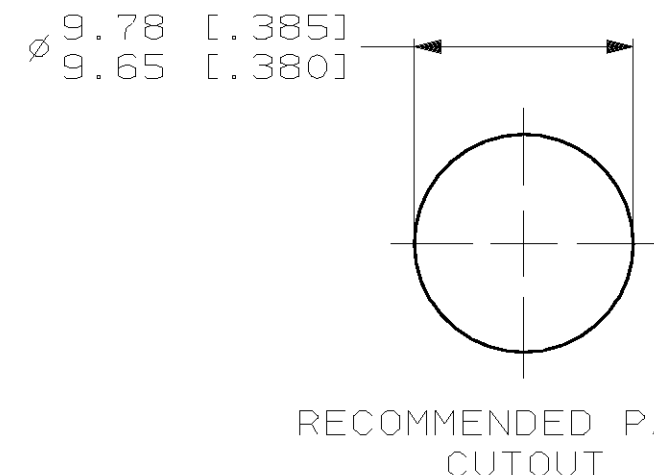


LOC	DIST	P	F	ZONE	LTR	DESCRIPTION	DATE	APPD
AJ	16				E	0B5 -3 & 5UP5D -2 PER 0E10-0115-99	27JAN00	MO

- ① PARTS INDIVIDUALLY PACKAGED
- ② 2.11 [.083] MAX PANEL THICKNESS
- ③ OBSOLETE
- ④ SUPERSEDED BY 222728-1



STEP #1 STEP #2
 FOLD BRAID OVER ITEM #3 AND TRIM
 RECOMMENDED STRIP LENGTH
 SCALE 2:1



RECOMMENDED PANEL CUTOUT

③	5.56 [.219]	RG-174/U, 316/U	222724-2	1-329492-1	222734-8	221276-3	221277-4	222733-2	221268-4	222729-1	222728-3
④	7.14 [.281]	RG-58/U	222724-2	1-329492-1	222734-2	221276-3	221277-1	222733-2	221268-2	222729-1	222728-2
①	7.14 [.281]	RG-58/U	222724-2	1-329492-1	222734-2	221276-3	221277-1	222733-2	221268-2	222729-1	222728-1
DIM A		FOR USE WITH CABLE	⑧ JAM NUT QTY=1	⑦ LOCK WASHER QTY=1	⑥ NUT QTY=1	⑤ WASHER QTY=1	④ GASKET QTY=1	③ CLAMP QTY=1	② CONTACT QTY=1	① PLUG ASSEMBLY QTY=1	PART NUMBER

DO NOT SCALE PRINT. UNLESS SPECIFIED DIMENSIONS IN mm [INCHES] TOLERANCES ON :		PART NO	
2 PLC DEC ± -	3 PLC DEC ± .010	DR 9-14-92 M.E. COWHER	AMP Incorporated Harrisburg, PA 17105-3608
ANGLES ± -		CHK 9-15-92 M. PHILLIPS	
MATERIAL		APPD 9-15-92 M. PHILLIPS	NAME
		APPD 9-15-92 M.E. COWHER	PLUG, PUSH-ON, 50 OHM, CAT "A", BNC
FINISH		APPLICATION SPEC	SIZE CAGE CODE DRAWING NO
			④ 00779 ④=222728
		WEIGHT -	SCALE 3:1 SHEET 1 OF 1

THIS DRAWING IS A CONTROLLED DOCUMENT FOR AMP INCORPORATED. IT IS SUBJECT TO CHANGE AND THE CONTROLLING ENGINEERING ORGANIZATION SHOULD BE CONTACTED FOR THE LATEST REVISION.